


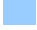




## PlantVisorPRO2 Service Pack 2.0.2

-  Air conditioning market
-  Refrigeration market
-  Humidification market
-  Retail market

10 October 2011

Dear Colleagues,

We are pleased to inform you Service Pack 2.0.2 is now available on KSA, applicable to PlantVisorPRO2 installed with versions:

- **2.0.0**
- **2.0.1**

The new Service Pack structure allows users to update units to the latest version with just one installation.

This new function eliminates the concept of intermediate Service Packs for each individual version, thus reducing the time needed to update PlantVisorPRO2.

Each version release will be accompanied from by list of compatible versions, as shown above.

To download the file, go to the following path on KSA:

Home: download: supervisory system software: PlantVisorPRO: Software update: **2.x**

New functions have been introduced and several existing functions have been improved so as to provide an increasingly powerful and reliable product.

The main new functions we want to highlight are:

- MODBUS SLAVE: Write variables;
- PLANT CALENDAR: Variable management;
- Export multiple reports;
- Reactivate license confirmation;
- New "Gas Leakage Detector" devices;
- Logical variables: Create logical alarms;
- RecoveryTool update;
- Display site name on login page;
- New "Saving" package:
  - Floating Suction
  - Dew Point Broadcast.



### MODBUS SLAVE: Write variables

The MODBUS SLAVE configuration interface allows quick and easy configuration of the Modbus protocol communication function with third party systems.

The following functions are available on the variables:

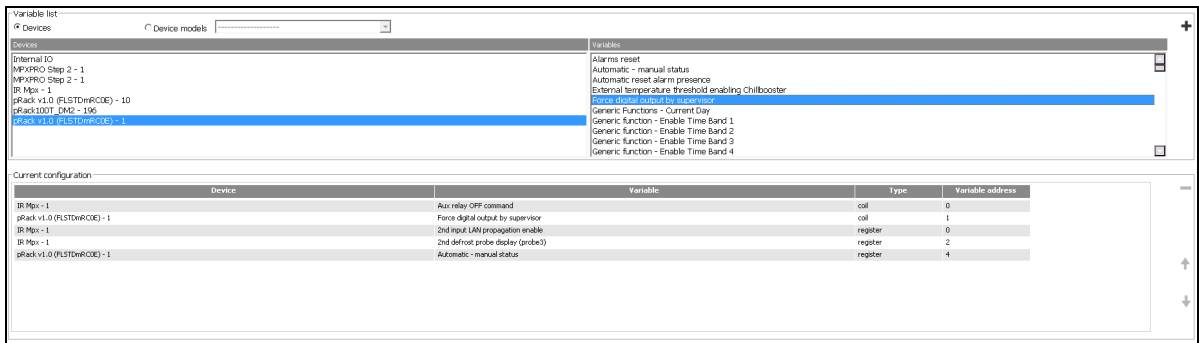
- **Read**
- **Write**

With the following limits:

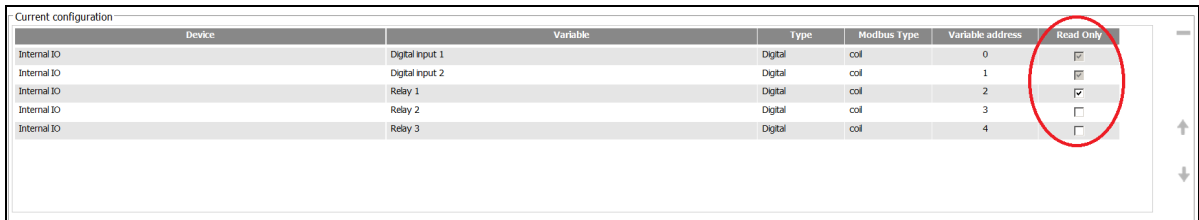
- **Up to 1,000** variables on all PP2 with code ending in: **\*XEO and \*TEO**
- **Up to 3,000** variables on all PP2 with code ending in: **\*XPO and \*TPO**



Definition of the communication channel and new enable write variable function.



Multiple selection of variables to be made available.



Read-only or write variables can be selected.



## PLANT CALENDAR: Variable management

The number of variables managed by the Plant Calendar has been modified. The new limits are now:

- **Up to 1,000** variables on all PP2 with code ending in: **\*XE0 and \*TE0**
- **Up to 2,000** variables on all PP2 with code ending in: **\*XPO and \*TPO**

In addition, the field engine has been modified which means the values are sent much faster.

## Export multiple reports

Possibility to export all documents from the data and alarm report archive with multiple selection.



## Reactivate license confirmation

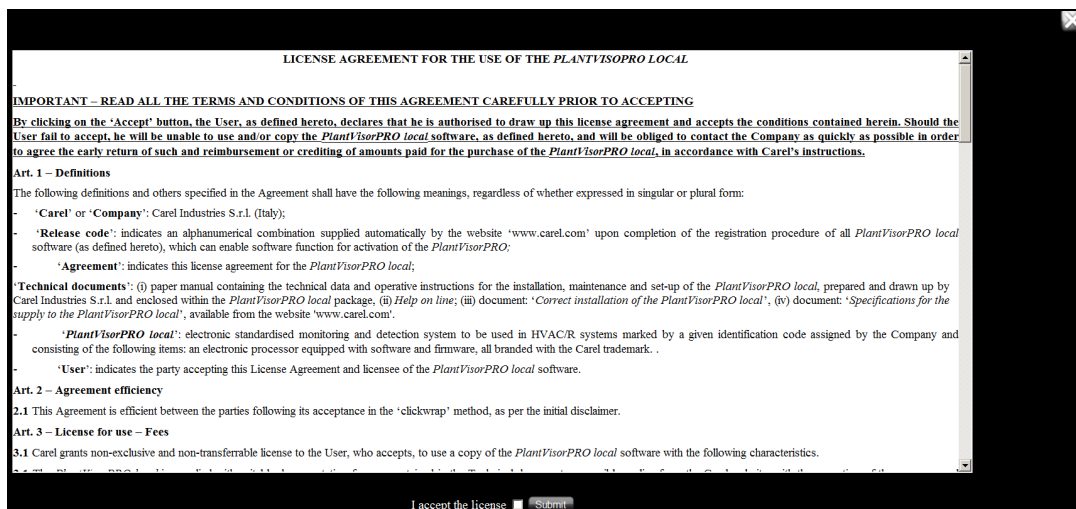
Possibility to reactivate the supervisor license via web.

This function is used when PlantVisorPRO2 needs to be configured before being sent to the final customer.

On the system page, uncheck the box and save:

**License agreement**

Before being able to access the login page, the user must first accept the license:






### New "Gas Leakage Detector" devices

Support for the new sensors designed to detect refrigerant gas leaks. Integration of these devices into the supervisor gives the user immediate feedback on sensor operating time and the time remaining until maintenance is required.

Refrigerant gas leakage detector

Description	
***	Days until annual test
	Sounder ON/OFF
	Annual Counter Reset



Read only variables

Value	Short desc.	Description
***ppm	Full Scale	Full scale level in ppm
***	Relay Status	Relay Status
***	Red Led Status	Red Led Status
***	Green Led Status	Green Led Status

Read/Write variables table

Value	New value	Short desc.	Description
***ppm		Alarm	Alarm Set Point
***min		Alarm Delay	Alarm Delay
***min		Sounder Delay	Sounder Delay
***		Sounder ON/OFF	Sounder ON/OFF

Gas level in ppm: \*\*\* [ppm]

Gas level (% of full scale): \*\*\* [%]

Alarm limit in % of full scale: \*\*\* [%]

Detector Address: \*\*\*

Software Version: \*\*\*

Alarm

### Logical variables: Create logical alarms

The possibility has been added to create logical alarm variables. These variables will be managed as alarms from the field.

Variable

Description:

Type:  integer  analogue  digital  alarm    Unit of measure:     Decimals:

operation:

Operands:

Constant:

Or select a variable from:

List of variables

Variable
Active remote control
Defrost timeout alarm
Defrost timeout alarm on secondary evaporator
Door open alarm
External delayed alarm / notification only
External immediate alarm



### Display site name on login page

The site name is displayed directly on the login page. This gives immediate feedback on which supervisor is being connected to.

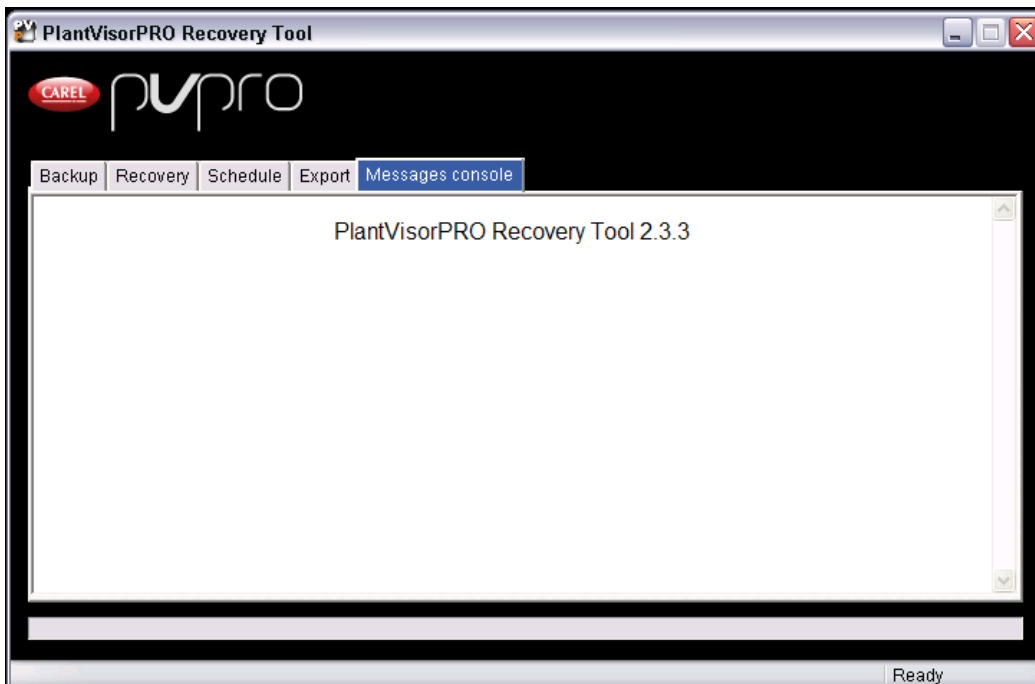




## RecoveryTool update

Operation of the RecoveryTool has been improved and two new functions have been added to respectively:

- Download the backup to FTP directory or external USB device;
- Improved messaging.





### New "Saving" package

Introduction of new codes for activation of the SAVING package.

Registration	
IP address/VPN IP	10.0.5.181/192.168.154.10
MAC address	00-19-99-7E-41-0E
Hardware version	2.0.3
Version	PlantVisorPRO version 2.0.2
<b>Description</b>	PP2STSV00 - PlantVisorPRO Saving Package
Serial number	<input type="text"/>
Activation code	<input type="text"/>



This package will activate the following plugins:

- Floating Suction Pressure Control;
- Dew Point Broadcast.

The package can be activated by requesting the following code:

- **PP2STSV00**

The order will be sent by email containing the Serial Number. This Serial Number is used together with the MAC-Address of the PlantVisorPRO2 to get the Activation Code from the KSA site.

Dear customer,

Here is your serial number for the product **PP2STSV00** - PLANTVISORPRO2 SAVING PACKAGE

**SERIAL NUMBER :** XXXXXXXXXX

To activate this SW package on your PlantVisorPRO, please register this serial number with your PlantVisorPRO Mac address at the website <http://www.carel.com/carelcom/web/eng/plantvisor/intro.jsp>

Best regards



In addition the following improvements have been made, as shown in the table below:

<b>TITLE</b>	<b>DESCRIPTION</b>
<b>Energy plugin</b>	Year added to the section displaying the log data.
<b>CAREL protocol</b>	Management of variables with multiple registers introduced
<b>Digital/alarm management</b>	Management of logged variables that via Device Creator were subsequently changed from digital to alarms has been corrected.
<b>Plant Calendar</b>	Management by Plant Calendar of the IRMpx device for the management of lights has been corrected.
<b>Profile management</b>	In new installations only, the End User profile has been corrected and write parameter rights have been removed.
	Management of the "set parameters" function on the profiles page has been corrected.
	Import / Export profiles bug fixed as regards the menu and parameter filters.
<b>Clock synchronisation</b>	Clock synchronisation corrected on MpxPRO.
<b>Virtual Keyboard on BOX</b>	Starting from BOX production units the virtual keypad is initially disabled.
<b>Import models</b>	Updated control on the coherence of the model imported as regards the frequency of logging and log depth.
	Management of custom buttons corrected when importing the model.
<b>Setting in field of compacted and logged variables</b>	Setting in field of variables that are at the same time compacted and logged has been corrected
<b>Synchronisation between Local and Remote</b>	Bug fixed regarding synchronisation of variable descriptions between local and remote.
<b>GuardianPRO</b>	Virtual keypad added to the ACK window in GuardianPRO.
<b>Support email</b>	Email sent from support page corrected in the event of configuration by SMTP Server with TLS authentication
<b>SDK</b>	Two new functions added to retrieve the status of the engine and the current device code. See SDK documents
<b>Alarm rules</b>	Updated function that in the event of alarms produces a report and sends it via email.

The following models of devices have also been updated:

<b>Model: Carlo Gavazzi</b>	"Power factor" variable fixed
<b>Model: HUMISTEAM</b>	Minimum value of parameter P1 – Differential corrected
<b>Model: gaSteam</b>	Minimum value of parameter P1 – Differential corrected
<b>Model: HeaterSteam</b>	Minimum value of parameter P1 – Differential corrected
<b>Model: Internal I/O</b>	Profiling control added on the Internal I/O device.

Kindly inform your colleagues and customers of the above.

Please don't hesitate to contact me for any further information. Best regards.